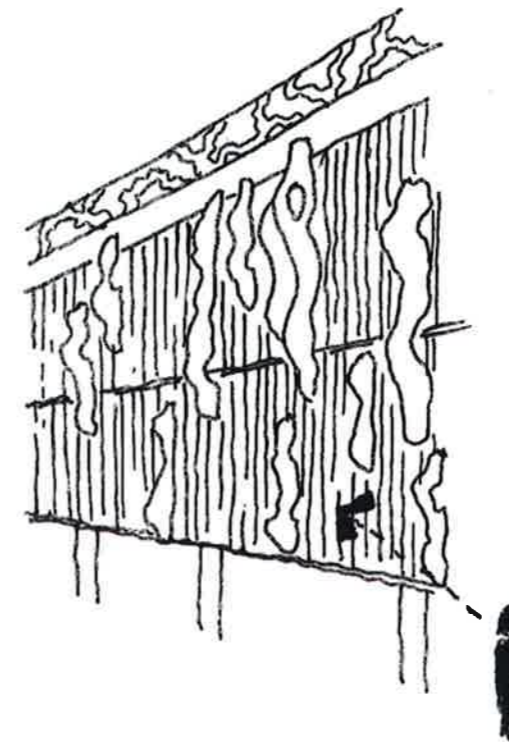
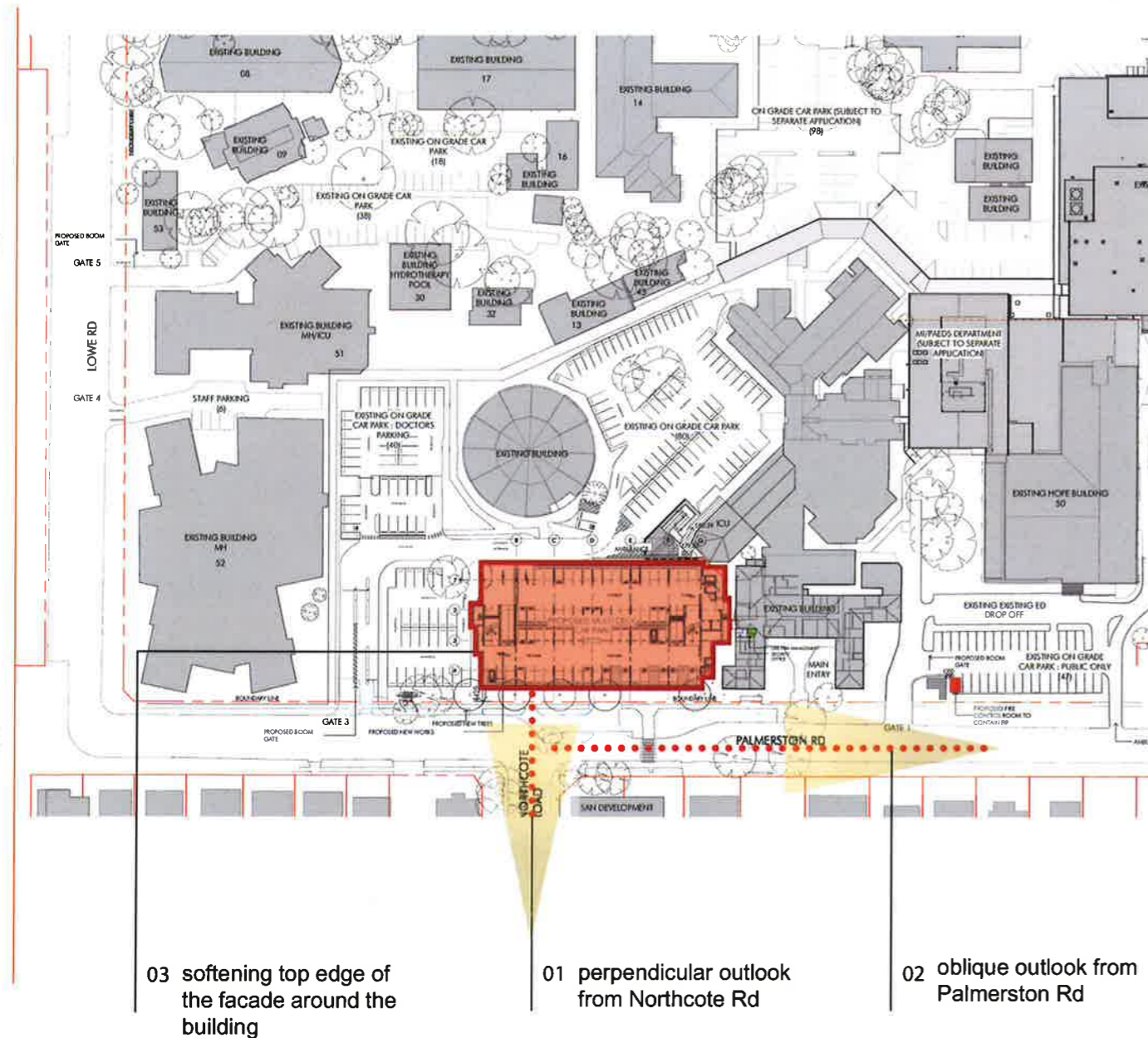


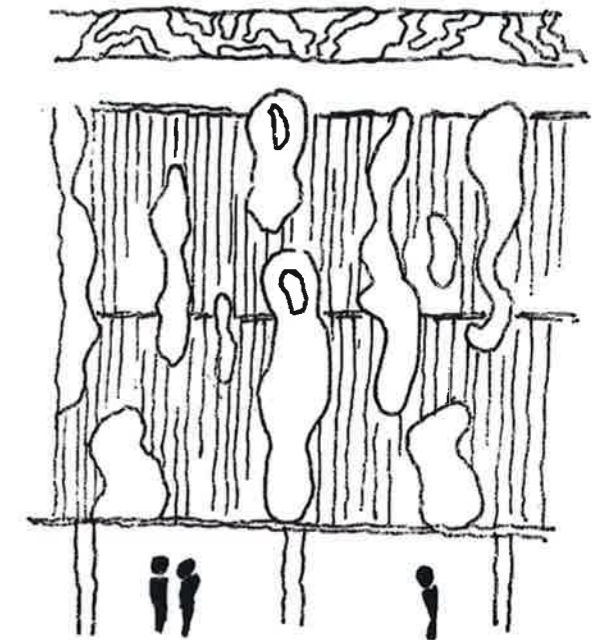
# facade strategy

maximising potentials of the site



oblique view  
from Palmerston Rd

The idea is to capture the essence of the angophora tree on the facade. Organic vertical screen elements would be installed around the facade. They will convey an irregular spacing and arrangement to emphasise the natural and organic language of the angophora trees. From Palmerston Rd, as the facade is viewed from an oblique angle, the organic screen element would mimic the impression of bark peeling off.



perpendicular view  
from Northcote Rd

As the building is viewed on a perpendicular angle from Northcote Rd, the vertical organic screen would gradually rotate and increase in density as it progresses to the northern end of the facade. Therefore, the implied reading of a "peeling bark" on the facade not only occurred when viewed on an oblique angle but also from a perpendicular angle. This also increases privacy and safety as it reduces the amount of penetrating light from incoming vehicles.

# facade strategy

perforated metal sheet  
organic shapes to soften  
the top of the building,  
perforated to mimic the  
language of branches  
and leaves, which allows  
natural light to penetrate.

vertical organic screen  
creates a reading of a  
“peeling bark” on the  
facade, coloured in two  
different shades

vertical silver screen  
spaced 120mm allow-  
ing safety & privacy, also  
coloured in two different  
colours to provide a more  
dynamic reading of the  
facade

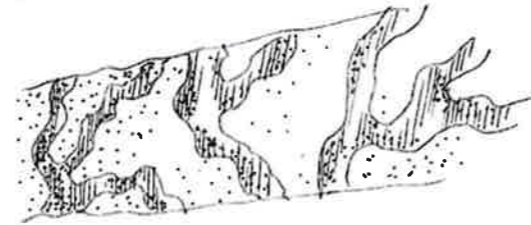
opportunity for  
landscaping  
softens the bottom part  
of the building, creating  
a more pleasant walking  
path for pedestrians

extended concretewall  
on the ground level, each  
end of the concrete wall  
is extended, organic  
shape is applied on each  
end to merge with the  
overall language of the  
facade

# facade strategy

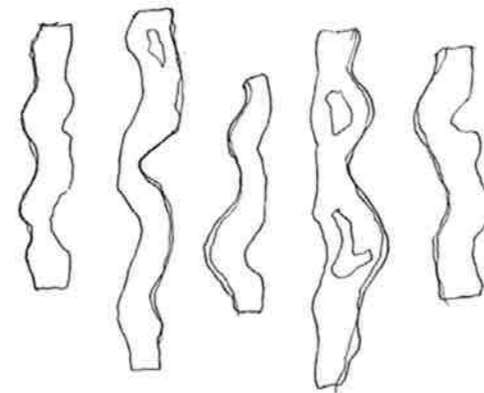
## perforated metal sheet

The organic shape of the metal sheet softens the top of the building. It is presented in the form of branches and leaves, which allow the penetration of natural light.



## vertical organic screens

The organic screens are arranged in an irregular pattern across the facade. To maximise efficiency, only 5 different shapes of screens are applied on the facade.



## vertical silver screens

These screens are spaced 120mm apart to maintain safety. Two different shapes with two different colour tone are used on the facade: a regular 100x50 screen, and a thinner element with an L-section profile. The arrangement of these two different elements adds depths and dynamics to the facade.

